



MARCH 2023

ENTERPRISE CITY NEWS

INSIDE THIS ISSUE:

THANK YOU FROM THE ELF TREE 1

SPORTS COURT RULES/ PAPERLESS BILLS 1

CARBON MON-OXIDE 2

SENIOR MEALS/ DROUGHT UPDATE 2

SPRING CLEAN-UP 3

BURN PILE PROHIBITED ITEMS 3

EMERGENCY PREP-FOOD PREP. 4

MEETING

SCHEDULE

- 7:00 PM Enterprise City Offices, 375 South 200 East

PLANNING COMMISSION

- March 7
- April 11

CITY COUNCIL

- March 8, 22
- April 12, 26

THANK YOU FROM THE ELF TREE

The Enterprise Fire and EMS Elf Tree committee would like to extend a huge thank you to everyone who helped make the Elf Tree donations happen this last Christmas! We are always so humbled to see the community pull together to help others. Thank you for your gift, food and financial donations. Thank

you to the Fire and EMS volunteers for meeting those who donated to open the firehouse to get tags and return gifts, and for driving the trucks and helping in the delivery. Thank you to Santa for coming to make the kids' night as well! This wonderful tradition we have could not happen without the help of

an even more wonderful community! We are so grateful, thank you isn't enough.

thank you

SPORTS COURT RULES

Here in Enterprise, we are lucky to have the City Sports Court to use without cost to the public. We recently had the floors deep-cleaned. We would ask those that use the sports court to please take good care of it. Please remember, NO food, drink or gum is allowed in the sports court with the exception of water. Only wear clean

shoes/gym shoes on the floor, sweep the floor every time after using the building, and clean up any messes that were made while you were in the court.

each time they are used.

Thank you for following these simple rules that will help to keep our Sports Court nice for all of us for years to come.

We have also begun to give permissions to access the storage door In the Sports Court, this is where the nets will be held and need to be returned to

PAPERLESS BILLS

The City of Enterprise is now offering paperless billing. You can opt to receive only email notifications for your bill if you'd like. This will help to cut down on paper waste, and you can continue to pay your bill the way that you have been or you can conveniently pay your bill online at xpressbillpay.com. If you would like to opt into paperless

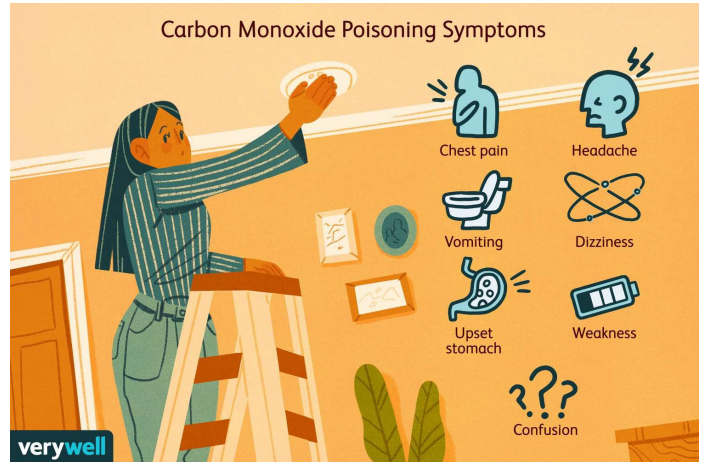
billing, send a quick email to ricci@enterpriseutah.org.

xpress BILL PAY

CARBON MONOXIDE CANT BE SEEN, SMELLED, OR HEARD

Carbon monoxide (CO) is an odorless, colorless gas that kills without warning. It kills hundreds of people every year and makes thousands ill. Many household items including gas and oil-burning furnaces, portable generators, and charcoal grills produce this poison gas. To keep everyone in the household safe, CO detectors must be installed in the home. Install battery-operated or battery

back-up CO detectors near every sleeping area in the home and check detectors regularly to be sure they are functioning properly.



SENIOR CENTER MEALS

The Enterprise Senior Center provides meals, activities, and ride services to the seniors in town. They provide a great service to our community and they served OVER 4,000 meals in 2022! That is incredible! We are so grateful to everyone who plays a part in providing this service to

the older generation in our community. You can see their monthly newsletter, activities, and menu online at <https://coa.washco.utah.gov/enterprise/>

The Senior Citizen Center is open on Tuesday, Wednesday

and Friday each week from 9:00am-3:00pm and serves lunch from 12:00-1:00.

Enterprise Senior Citizen Center provided over 4,000 meals in 2022!

DROUGHT UPDATE

With all of this moisture we've been getting through this winter, Utah is now out of Exceptional Drought (the worst category). The state as a whole is still in the second and third worst categories of drought (severe and extreme) however the area of Enterprise is now in the category of Moderate Drought!

According to the Natural Resources Conservation Service in their latest report,

Utah is now guaranteed to have an above-normal snowpack! From now until the onset of snowmelt, every additional inch of snow will push the state farther above normal. The only years that have had more snow at the beginning of February since the SNOTEL network was installed were 1984 and 1997.

Snowpack in Southwestern Utah is well above normal at

225% of median compared to 129% at this time last year.

January precipitation in Utah was well above normal at 196%, making it one of the best winters in the past 20 years! 2017 and 2005 were slightly better than 2023.

The Enterprise Lower Reservoir is currently at 46.04% of capacity as opposed to December when it was at 8.46%

of capacity.

The Enterprise Upper Reservoir currently sits at 35.23% of capacity. In December the upper reservoir was only at 5.87% of capacity.

It will take multiple years of above-average snowpack to refill our reservoirs but we're off to a great start.

You can check out these statistics and more at drought.utah.gov.

SPRING CLEANUP

Spring is on it's way and it feels so good to finally take care of our homes and yards after what feels like, a long winter. There will be 2 extra roll-off dumpsters at the dumpsite from March 24-31 for all of your spring cleaning needs. Don't forget that natural waste such as tree branches need to be placed in the burn pile north of the dumpsite. DO NOT put any building materials, tires, or

any other unnatural product in the burn pile. It is dangerous to burn.

As you progress through your spring cleaning, consider donating good, but unwanted items to a thrift store or have a yard sale.

You can also recycle a lot of items. The recycling bins lie to the East of the Post office just off of Center Street. Funds from the recycling bins

are refunded to the City annually, so this is a good option. Recycling is voluntary in Enterprise. Please help us keep this service by making sure that everything you recycle ends up in the bins and not around them.

Happy Spring Cleaning!

2 Roll-off dumpsters will be at the dumpsite from March 24-31 for Spring Cleanup.

BURN PILE PROHIBITED ITEMS

The burn pile continues to receive **prohibited** products comingled with the green waste material. These items include **concrete, rebar, plastics, metals, car tires, limbs more than 6" in diameter, root balls, barbed wire, tarps, logs and general garbage.** This makes burning the pile difficult and dangerous. There are dumpsters at the dump station to drop burn pile prohibited waste materials. Do not mix them and put them in the burn pile. We appreciate your cooperation.



Washington County Solid Waste District

Public Information Announcement

Prohibited Items



Like us on Facebook!

[Facebook.com/EnterpriseUtah](https://www.facebook.com/EnterpriseUtah)

WE ARE HERE TO HELP!

City Of Enterprise
375 South 200 East
Po Box 340
Enterprise, UT 84725
Phone: 435-878-2221
Fax: 435-878-2311
Email: contact@enterpriseutah.org

ENTERPRISEUTAH.ORG

“ T O G E T H E R W E C A N A C H I E V E M O R E ”

EMERGENCY PREPAREDNESS-FOOD PREPAREDNESS

It's easier, financially, to build up emergency food storage gradually over the year, instead of all at once, or not having the ability to do so in a disaster or hardship. Here are four tips to help you start acquiring one of the most valuable preparedness essentials, an emergency food storage.

1. Have 72 hours worth of food in a "grab and go" emergency. Foods that are light weight, require no refrigeration, preparation or cooking, and little to no water. If you

must heat food, pack a can of Sterno or a back-packing stove.

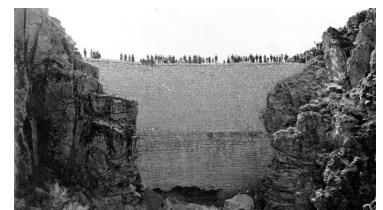
2. Make a supply list. Assess needs depending on the size of your household, including pets, and determine items that your family prefers to eat. You can easily acquire a 3-6 month store of food by grabbing a few of these items during each of your normal shopping trips.
3. Manage and rotate your

food inventory. Make sure to use and replace items that are close to the expiration dates. It's important to store items that you are used to preparing and your household is used to eating. Experimenting with recipes to utilize your food storage can help with this adaptation.

4. Include a variety of storage items and learn sustainable skills. Add boxed food, food in jars, and start building up a store of grains, legumes,

Enterprise City is a rural farming community located in Southwest Utah. The area raises some of the best hay, corn and kids. With several nearby lakes, boating and fishing opportunities are easy to find. Enterprise is the kind of place you like to call home and also like to come home to. The mountains also invite with their scenic beauty, atv and hiking trails, as well as some great hunting. At the end of August, Enterprise City hosts it's annual "Corn Fest", where the whole town turns out to celebrate small town life and the bounty that our local farmers produce.

Pioneer Settlers entered the area in the late 1800's and settled a few miles West of present day Hebron. Those industrious pioneers had a grand plan to build a large dam to help store a sizable amount of water for irrigating their crops during the dry summer season. This allowed them to irrigate far more land and to move farming into the broad valley East of Hebron. Soon a new townsite was plotted and most Hebron residents moved to present day Enterprise.



Enterprise Reservoir Dam

fats & oils, powdered milk, salt, sugar or honey, and water. Keeping a garden and working with food from it can help add to your reserves.

Utah.gov/beready/family/food.html

Ready.gov/food