



DECEMBER 2022

ENTERPRISE CITY NEWS

INSIDE THIS ISSUE:

TREE LIGHTING CEREMONY 1

BOWLER AG LIGHT PARADE/TRASH PICKUP INCREASE 1

NEW HIRE/CITY OFFICE HOLIDAY CLOSURES 2

ELF TREE/RECYCLING HOLIDAY DEBRIS 2

HOME HEATING FIRE SAFETY/CHRISTMAS TREAT RECIPE 3

TREE LIGHTING CEREMONY PHOTOS 4

EMERGENCY PREP WINTER DRIVING 5

MEETING

SCHEDULE

- 7:00 PM Enterprise City Offices, 375 South 200 East

PLANNING COMMISSION

- December 13
- January 10

CITY COUNCIL

- December 14
- January 11

CHRISTMAS TREE LIGHTING CEREMONY

This year's Christmas Tree Lighting Ceremony was wonderful! Marv Hall was asked to light the tree this year. The Marv Hall family has lived in Enterprise most of their lives and have been an incredible support to our community and sporting events as well as employing many people in town at one time or another. We are grateful for amazing families who make Enterprise the best place to live. I hope we all will remember the sup-

port we've had over the years from these wonderful people and try to keep the Enterprise tradition of helping each other going.

Thank you to The Singing Sisters, Jana Dunford and the Elementary School children, Mr. Mickelson and the High School choir and band for the beautiful musical numbers that you shared with us. We are grateful for your support of this event and we look forward to hear-

ing your lovely music each year.

As always, after the Tree Lighting everyone enjoys cookies and hot chocolate on their way out. We appreciate the girls who help to pass out these treats. We couldn't celebrate together without a group effort.

Tree lighting photos will be on page 4.

BOWLER AG LIGHT PARADE

This year marked the 3rd Annual Bowler Ag Light Parade. This is such a fun event for the family. Local community members, businesses and organizations decorated their vehicles with many Christmas lights and paraded down Main Street for all of our families to enjoy!

The parade immediately followed the tree lighting and made for an exciting end to the night.

Thank you to Bowler Ag for starting such a fun Enterprise Christmas Tradition that we all look forward to!

Trash Pick-up Increase

On November 14, 2022, Washington County Solid Waste District's Administrative Control Board approved a \$0.59 increase per household per month for residential curbside pickup. This change will take effect January 1st, 2023.



WELCOME NEW HIRE CLINT HAFEN

The City would like to welcome new hire Clint Hafen. Clint has been hired for the utility/maintenance department.

Clint grew up in Washington Fields spending most of his time hanging out and farming with his grandpa. He met his wife Jamie as a senior at Pine View High School and married her in 2003. After deciding St. George wasn't what it used to be, they

decided to move to Enterprise in 2006. It seemed like the perfect place to raise a family. Clint and Jamie have 4 kids, Braxton, Kashden, Brodeyn and Braelei. They recently moved out to bench road and built a barn home and are loving all the space! Clint enjoys his small cow herd and puts up with his wife's dogs. Loves to take his family camping and anything outdoors. He

enjoys hobby farming and living the simple small town life.



The City Office will be closed on Friday, December 23rd and Monday, December 26th in observance of Christmas and Monday, January 2nd for New Year's. Merry Christmas and Happy New Year!

ENTERPRISE FIRE & EMS ELF TREE

Every Christmas season, The Enterprise Volunteer Ambulance and Fire Department finds an Enterprise Family in need of help for the holidays. The Elf Tree committee learns of the specific needs and wants of the family and creates gift prompts that

community members can take to buy gifts for this family. To get a gift prompt, you can contact a member of the ambulance or fire department to let you into the fire station to pick a prompt off of the tree. The Elf Tree also includes stockings for the

family and a holiday dinner. There will be a bin at Carter's Market where you can donate food items for the family as well. Thank you for your support, past and present, of the Elf Tree. It wouldn't be possible without our volunteers and community members.



RECYCLING HOLIDAY DEBRIS

With all of the excitement of the Christmas season and gift-giving, there is usually a surplus of waste the day after Christmas. Avoid over-filling your trashcans and recycle your wrapping paper and packaging your gifts came in at the recycling bins that are located at the Post Office. Recycling is voluntary in

Enterprise. There are metal, plastic, glass and paper recycling bins conveniently located near the Post Office. Funds from recycled materials are refunded to the City annually, so we encourage all that wish to, to use this service. Please help us to keep this service by making sure all items are put in the bins, not around them to keep the area clean of garbage and debris.

*Please do not place your items to be recycled in bags—they should be placed in the bins as separate items. Placing items that cannot be recycled only increases the cost to process the materials.

HOME HEATING FIRE SAFETY

As we are now approaching mid-winter, we would like to remind you to keep fire safety in mind when heating your home in the months ahead. January and February are the leading months for home heating fires. Overall, heating equipment is the second leading cause of US. Home fires and home fire deaths. Confined fires, those fires confined to chimneys, flues or fuel

burners, accounted for 87 percent of residential building heating fires. Following these four heating tips will help prevent winter fires and help you to stay safe this winter season:

- Keep anything that can burn at least 3 feet from all heat sources including fireplaces, wood stoves, radiators, space heaters or candles.
- Never use an oven to heat your home.
- Turn space heaters off when leaving the room or going to bed.
- Maintain heating equipment and chimneys by having them cleaned and inspected annually by a qualified professional.

Heating equipment is the 2nd leading cause of U.S. home fires and home fire deaths.

CHRISTMAS TREAT/OREO BALLS FOR CHRISTMAS

Everyone loves a delicious and easy Christmas treat. These Christmas Oreo Balls and other fun recipes can be found on hoosierhomemade.com.

*1 pkg. (1lb 4oz) Mint Oreo Cookies

*1 8oz block of cream cheese

*Almond Bark—white and chocolate—the amount will depend on the number of Oreo balls you are coating and how many times you coat them. Start with 16 oz and melt 4 squares at a time. Details below in instructions.

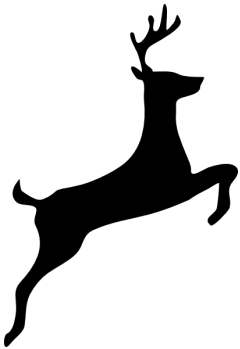
*Christmas Sprinkles

*Red and Green candy melts

1. Line cookie sheet with parchment paper.
2. Add softened cream cheese to bowl.
3. Crush Oreo cookies including the centers in the food processor. If you don't have a food processor, you can also use a resealable bag and a rolling pin to crush them.
4. Add cookie crumbs to bowl with cream cheese.
5. Stir the cream cheese and crumbs together until well combined.
6. Using a 2 tablespoon cookie dough scoop, form the ball.
7. Roll the ball between your hands until it's smooth.
8. Place on lined cookie sheet.
9. Chill in refrigerator for at least 30 minutes, longer is fine.
10. Place 4 squares of chocolate in microwave safe bowl and melt. Start with 1 minute, then stir. Heat for 30 second intervals, stirring after each heating. Stop when there are a few bits of chocolate left, then stir until completely melted.
11. Using a fork, dip the Oreo ball into the chocolate and shake off excess.
12. Place on lined cookie sheet, removing from fork with another fork or knife.
13. Add sprinkles immediately.
14. Store in refrigerator until ready to serve. They may stay at room temperature for a few hours.

For Colored Candy Melts

1. Melt colored candy melts in microwave safe bowl, then transfer to a squeeze bottle for this step.
2. Start by squeezing the chocolate onto the parchment paper, then swirl on top of Oreo ball.



Like us on Facebook!

Facebook.com/EnterpriseUtah

WE ARE HERE TO HELP!

City Of Enterprise
375 South 200 East
Po Box 340
Enterprise, UT 84725
Phone: 435-878-2221
Fax: 435-878-2311
Email: contact@enterpriseutah.org

ENTERPRISEUTAH.ORG

“ T O G E T H E R W E C A N A C H I E V E M O R E ”

EMERGENCY PREPAREDNESS-WINTER DRIVING

According to the DOT there are over 1.2 million weather-related vehicle crashes each year, which cause, on average nearly 6,000 fatalities and over 445,000 injuries. Be vigilant while traveling in snow, ice, fog or rain this winter by preparing in advance with the following tips.

Get your vehicle ready:

Check the condition of your wiper blades, anti-freeze, tires, batteries and anything else that is most affected by low temperatures and bad weather. Make sure your tires have good tread, and you

clear snow from all of your windows, head and taillights. It's a good idea to stock your car with a winter supply kit that includes a phone charger, batteries, flashlight, first aid kit, food, water, sand, shovel, Ice scraper, jumper cables and blankets or extra coats. Be sure to check weather forecasts and road conditions and change your travels plans if necessary.

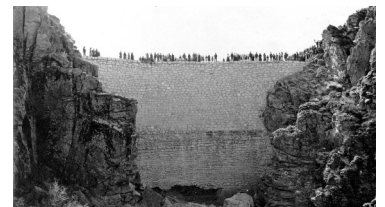
While on the road: Keep your gas tank over half full. Drive slower than normal and leave more room between the vehicles around you. Give snow

plows plenty of room to work and only pass when it is safe to do so, but keep in mind the road is safer behind them.

Always focus on safety: Always wear a seatbelt, and when in an accident, try to pull the vehicle off the road and use hazard lights, reflectors or flashlights to warn other drivers. Stay off the road, call 911 and wait for police to arrive. Always drive undistracted.

Enterprise City is a rural farming community located in Southwest Utah. The area raises some of the best hay, corn and kids. With several nearby lakes, boating and fishing opportunities are easy to find. Enterprise is the kind of place you like to call home and also like to come home to. The mountains also invite with their scenic beauty, atv and hiking trails, as well as some great hunting. At the end of August, Enterprise City hosts it's annual "Corn Fest", where the whole town turns out to celebrate small town life and the bounty that our local farmers produce.

Pioneer Settlers entered the area in the late 1800's and settled a few miles West of present day Hebron. Those industrious pioneers had a grand plan to build a large dam to help store a sizable amount of water for irrigating their crops during the dry summer season. This allowed them to irrigate far more land and to move farming into the broad valley East of Hebron. Soon a new townsite was plotted and most Hebron residents moved



Enterprise Reservoir Dam